

Friends of Marsh Creek Watershed

Creek Talk

December 2008

Things to Do:

- **Salmon Walks**

Sign up soon walks are filling up fast!

December 13th

RSVPs are requested so that we can have enough walk leaders to accommodate the groups.

RSVP the size of your group and your contact information to Diane at 925.325.2908 or email at info@fomcw.org

Next walk will be January 10th

- **Native Plant Garden**

December 20th
9 AM to Noon
We need a half a dozen folks with basic irrigation skills to come out to help set up irrigation for our new garden site.

Next Work Day
January 10th

RSVP Diane at 325.325.2908 or info@fomcw.org

~Happy Holidays to You and Yours!!~

This month's meeting:

December 11th

6 to 8PM

Featuring:

"Salmon Habitat Restoration"

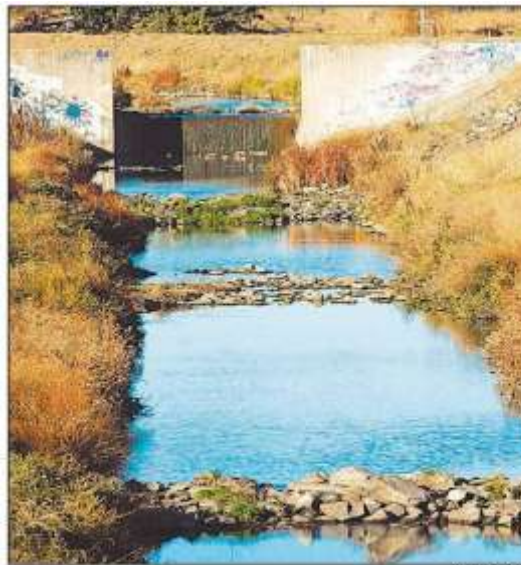
Presenter:

**JD Wikert,
Habitat Restoration Specialist,
Anadromous Fish Restoration Program,
United States Fish and Wildlife Service**

Where:

**Mocha Coffee & Dessert Bar
(Formerly Starbucks)
7760 Brentwood Blvd,
Brentwood
at Sunset Plaza
[click here for directions](#)**

A Special Thank You to
Mocha Coffee and Dessert Bar
for letting us use their space for our meeting!



KEN PERKIN
SITE WHERE THE FISH LADDER will be built in 2009. The ladder will allow native chinook salmon to return to the reaches of the creek.

FOMCW in the News

Check out the great article in Discover the Delta Magazine, a Publication of the Contra Costa Times. [Contra Costa Times](#)

Upcoming Speakers:

January 8

Wayne Reeves,
Liberty Union
High School
District

Discussing plans to build the new high school on Sellers and its relationship to Marsh Creek

Meeting will be at
LUHSD offices
boardroom

February 12

John Kopchik,
Contra Costa
County
Department of
Conservation and
Development

Discussing the issues of Creek Set Backs and he will also be giving us updates on the Habitat Conservation Plan.

March 12

**Creatures of
Marsh Creek
Watershed**

April 9

Anne
Littlejohn,
Regional Water
Quality Board

May 14

Abby Fateman
Contra Costa County
Department of
Conservation and
Development
discusses the
**Historical Ecology
of East Contra
Costa County**

Dutch Slough Restoration Project News!

On November 20, 2008, the California Department of Water Resources, as the Lead Agency, released the Draft Environmental Impact Report for the Dutch Slough Tidal Marsh Restoration Project.

It is available on the internet at

<http://www.water.ca.gov/floodmgmt/dsmo/ecb/maep/dutchslough/deir/>

There will be a 60-day comment period which will close on January 19, 2009. Written comments would go to:

Patty Quickert
DWR Delta-Suisun Marsh Office
1416 9th Street Room 1623
Sacramento , CA 95814

A public meeting will be held to allow public comment on the Draft EIR:

December 11, 2008 from 1:00 to 4:00 pm

Oakley City Hall Council Chambers

3231 Main Street

Oakley



Have you bought your tree yet?

Boy Scout Troop 152 has a wonderful selection of Christmas Trees at their lot located in 3460 Main St., Oakley Delivery available upon request.. For information, call 925-625-0601.

Interesting Link

Contra Costa
Clean Water
Project

Common Marsh
Birds of East Bay
Regional Parks

Contra Costa
County
Watershed Atlas



Funding for this newsletter and many of our other activities is generously provided by a grant from the CALFED Watershed Program, administered by the California Department of Water Resources, and a grant from the California Department of Conservation



Contact Us
Friends of
Marsh Creek
Watershed
2063 Main St., #311
Oakley, CA
94561
fomcw.org
info@fomcw.org
925.325.2098

Help the Lange's Metalmark Butterflies!



Lange's metalmark butterflies are found nowhere else in the world, except at the Antioch Dunes National Wildlife Refuge. They need your help to improve the habitat. They will be planting naked-stemmed buckwheat the host plant for the endangered Lange's Metalmark Butterfly at Antioch Dunes National Wildlife Refuge! They have 7000 plus new buckwheat plants ready and sure could use your help planting them.

For dates and times
[click here](#)

For more information contact:
Louis Terrazas
PH: (510) 377-1233; email:
louis_terrazas@fws.gov
US Fish and Wildlife Service

When the rains come....

Storm drains are located throughout the Marsh Creek watershed. What we do in our yards and communities affects Marsh Creek and the Delta through the storm drainage system. When it rains, the water running along the gutters in the street vanishes down storm drains. Where does the water go? **The water in a storm drain does not go to a wastewater treatment plant like many people assume. This water drains into Marsh Creek and eventually empties into the Delta.** Nothing is removed from the water. That means pet waste, yard debris, fertilizer, motor oil, pesticides and trash all have the potential to flow into the Bay.

Things you can do to help prevent storm water pollution into the watershed and bay:

- Sweep driveways instead of hosing them down.
- Don't allow leaves or green waste to accumulate; compost or dispose of them properly, not along creek banks.
- Use Bay-Wise and Eco-Friendly gardening methods. Adopt integrated pest management (IPM) methods. Minimize the use of chemicals around your home.
- Consider installing raingardens and/or bioswales to treat stormwater run-off on your property.
- Oversee your contractors to ensure they are not illicitly discharging to the storm drain system.
- Never clean-out paint brushes or tools in the gutter where waste water will flow to the storm drain and impact waterways. Even latex paint alters water quality.
- Remind your neighbors of street sweeping days and move your cars and trash/recycle bins to allow street sweepers access.
- Discharge your pool/spa/fountain into the sanitary sewer or onto landscaping.
- Wash your car at a commercial car wash, where waste water is treated and recycled.
- Organize litter clean-ups in the neighborhood and volunteer for creek restoration events.

To Report Illegal Dumping call **1-800-NO DUMPING**

