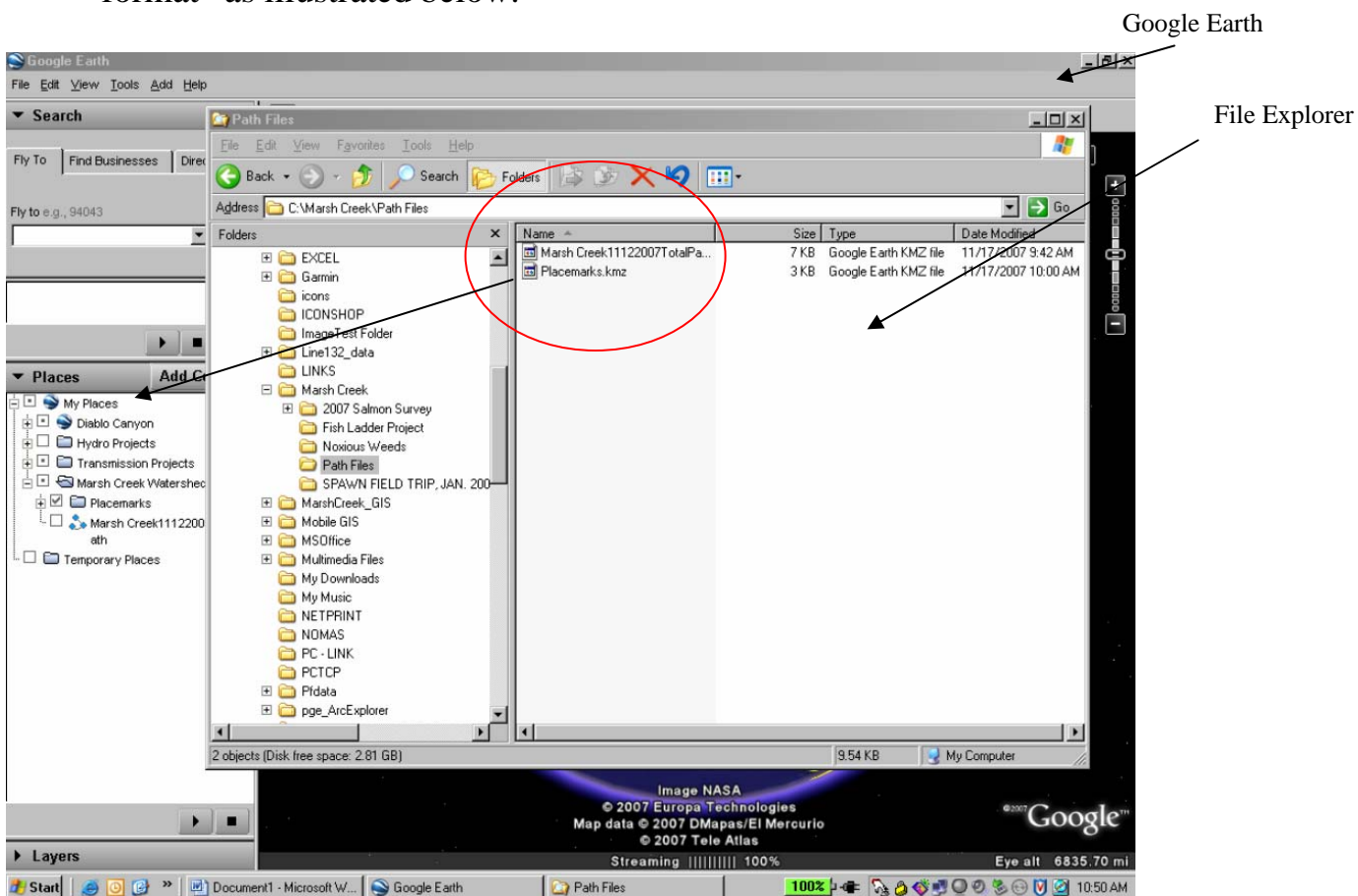
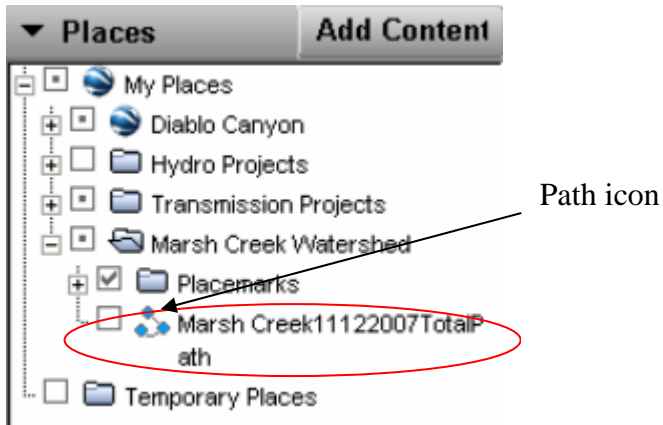


Accessing Google Earth Tour data for Marsh Creek Watershed

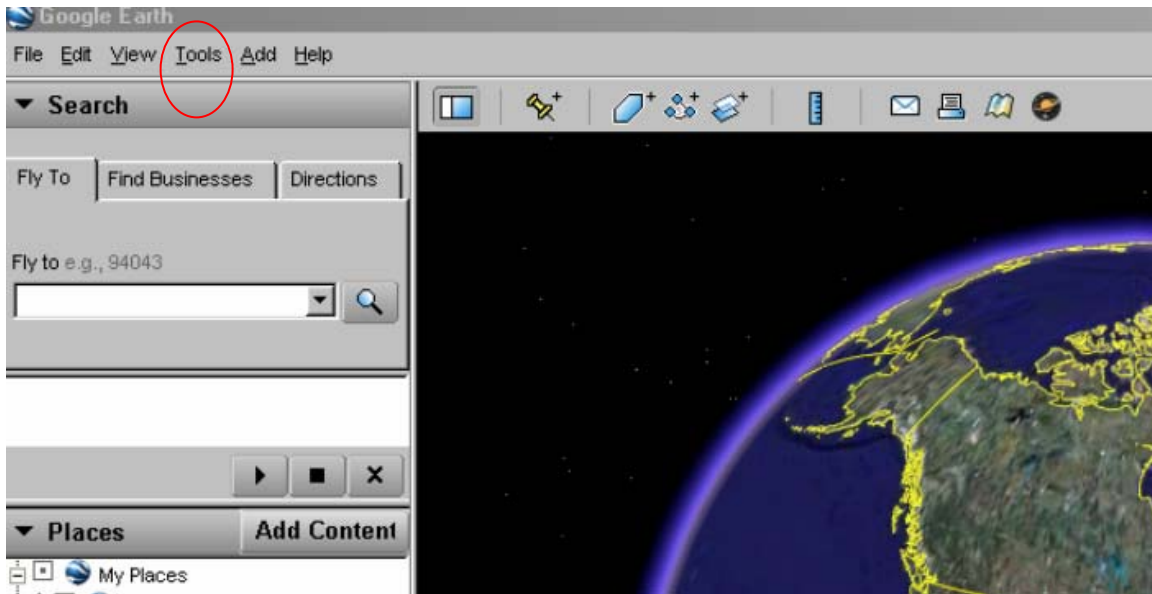
1. Download most recent version of Google Earth software from the internet to your PC. Go to: <http://earth.google.com/download-earth.html> for free download.
2. Return to Friends of Marsh Creek Watershed website and locate three files needed to create the Marsh Creek tour. These files consist of an instructions file (pdf format), a path file, and a place marks folder.
3. Save the files to your computer's hard drive where you can easily find them (I suggest you create a named folder such as "Marsh Creek Google files")
4. Open both Google Earth and your file explorer programs and display them simultaneously by switching one of the applications to "reduced format" as illustrated below.



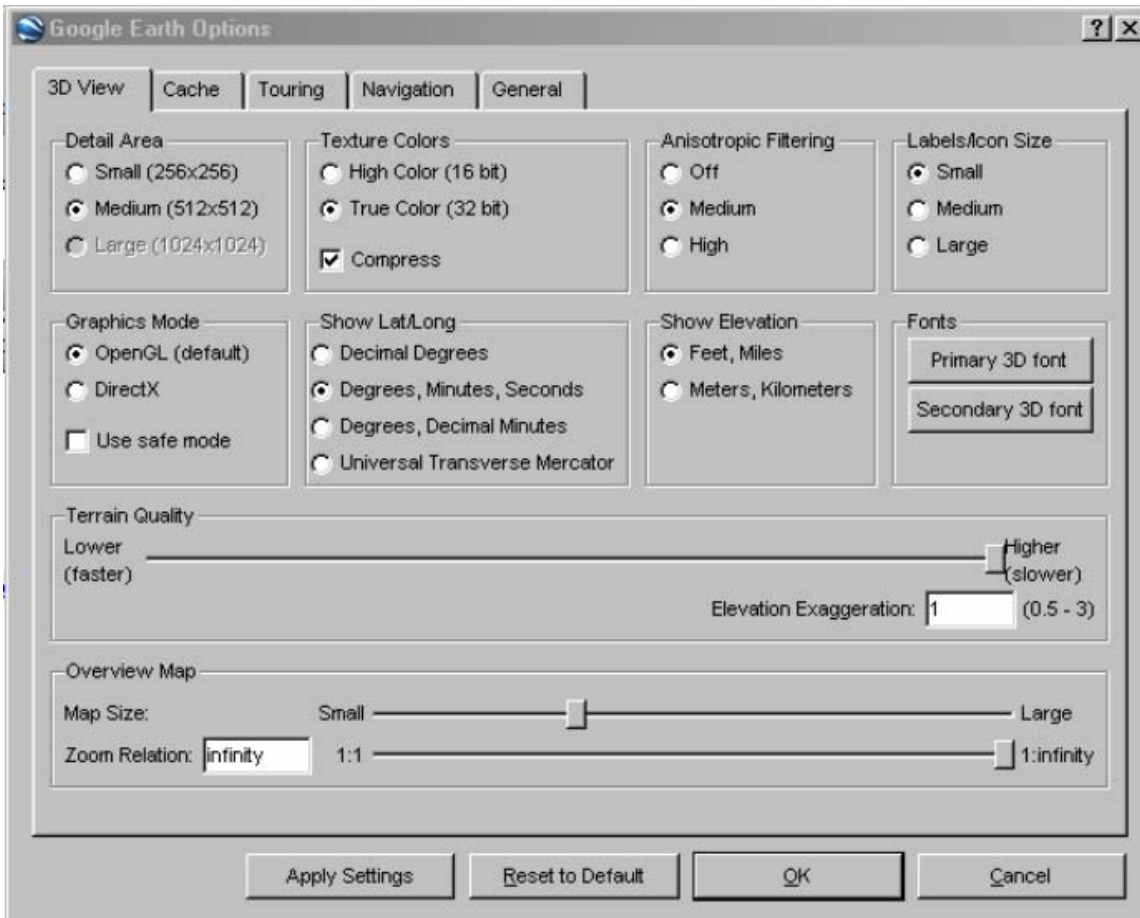
5. Execute a “drag and drop” of the two files placing both in “My Places” on the Google Earth file directory (see illustration above).
6. The path file will appear in My Places as a folder with a blue and white spherical Google Earth icon next to it. Double click this file and the actual path file will appear with the path icon next to it as shown below:

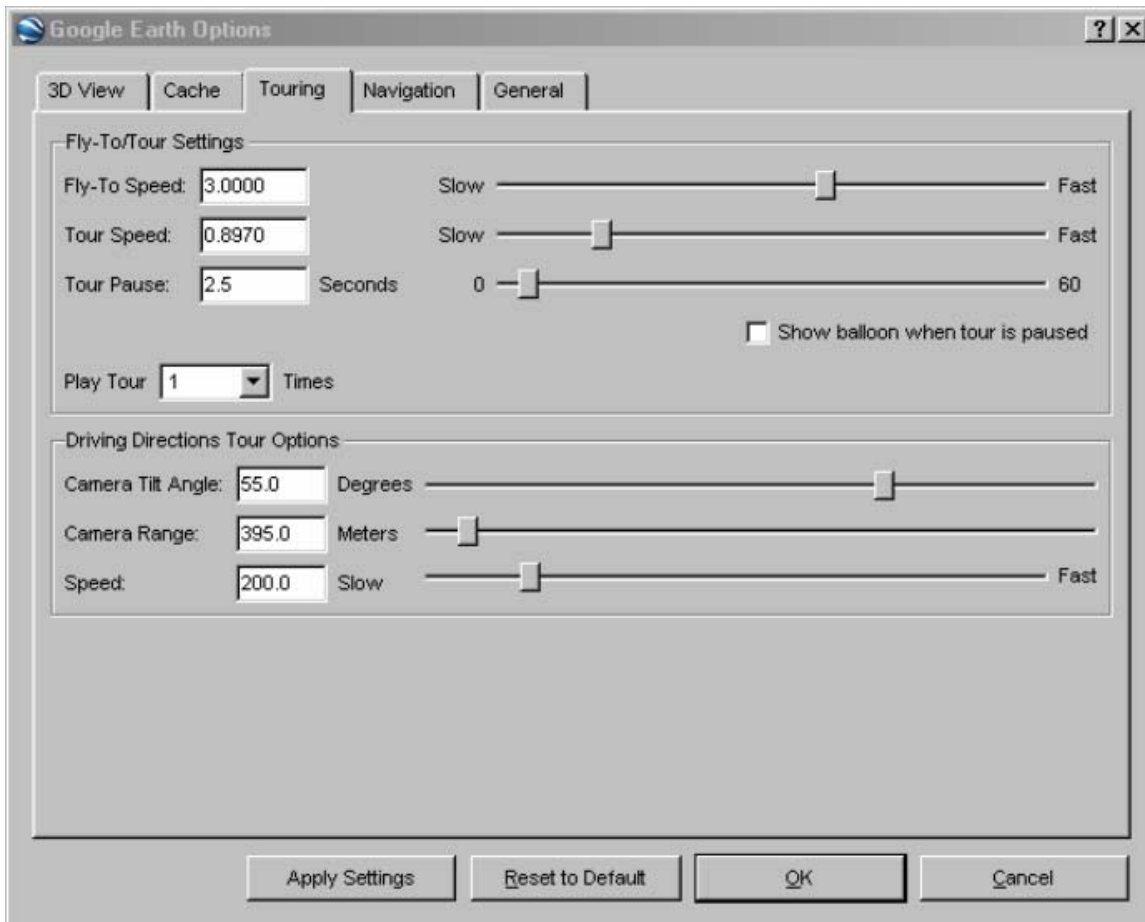


7. There is no need to do anything with the place marks folder, however you can double click the folder to expand its contents, revealing the individual place mark files contained within. These place marks will automatically be added to the screen view in Google Earth.
8. The Marsh Creek Tour Path is almost ready to launch, there are just a few adjustments necessary aimed at giving the best view possible. In the Google Earth tool bar select the “Tools” button as shown below.



Under the Tools menu select “Options.” A dialog box opens with several pages of settings. We are interested only in the “3-D” and “Touring” pages of this box. Adjust your settings to match the settings as they appear in the two illustrations below. You can adjust settings using the slider bars or type directly into the value boxes.





9. After making the necessary adjustments to option settings click on “apply settings” and then on “OK”. Next, save all files and settings by clicking on “File” in the upper left corner of the Google tool bar and under “Save” select “Save My Places.”
10. Launch the Marsh Creek Tour by selecting the Path file (see step 6 above) with a single left click, then under the “Tools” button in the Google tool bar click “Play Tour.” Now, sit back and enjoy the show!!
11. Note – You can stop and restart the tour using the buttons located in the file directory window (left side of Google Earth display). While paused, if you alter the view by panning or exercise any of the other Google Earth tools you will be sent back to the beginning of the tour when you click the play button again.